

# KYZYL-SUU

## INVESTMENT PROFILE



2019





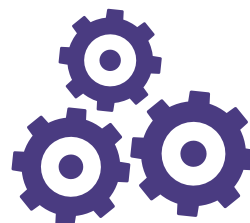
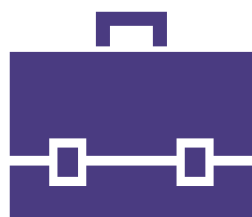
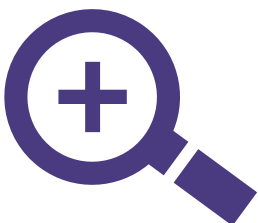
## CONTENTS

Brief presentation.....	4
Why invest in Kyzyl-Suu? .....	5
General Information .....	6
Logistics .....	7
Infrastructure .....	8
Land.....	9
Businesses .....	10
Competitive sectors .....	11
Investment projects.....	13
Labor potential.....	13
Administrative procedures for construction .....	14
Services for investors .....	15
Banks and notary offices.....	16
Registration of legal entities.....	17
Key Investors .....	18
Success Stories .....	18
Quality of life .....	19
Development program .....	19

## BRIEF PRESENTATION

Kyzyl-Suu village is the administrative center of the Jeti-Oguz district. In the past Pokrovka was the name of the settlement. The modern name of Kyzyl-Suu derives from the name of the river flowing through Chon Kyzyl-Suu village.

The village is located between the Jeti-Oguz health resort and the canyon. The distance between its border and the Issyk-Kul lake shore is less than 10 km. A road of regional significance runs through the village.





## WHY INVEST IN KYZYL-SUU?

- Kyzyl-Suu has a direct access to the motor road of regional significance and an access to maritime transport through Karakol city.
- The Kyzyl-Suu climate and natural resources together with availability of highly qualified and competitive workforce and the well-developed road infrastructure create unique conditions for the development of the food processing industry.
- Kyzyl-Suu Administration offers investors new (greenfield) and existing (brownfield) investment projects and the municipal lands.
- Kyzyl-Suu offers investors extremely attractive conditions!



## GENERAL INFORMATION

**Area:**

16313 ha.

**Population:**

16,174 people  
(as of January 1, 2018)

**Location:**

Kyzyl-Suu village is located in the Jeti-Oguz District of the Issyk-Kul Region of the Kyrgyz Republic.

**Altitude:**

1770 m

**Time zone:**

UTC/GMT +6:00 h.

**Language:**

Kyrgyz (state), Russian (official).

**Climate:**

The climate of the Issyk-Kul valley is determined by its isolated location and the presence of the large nonfreezing Issyk-Kul lake. The lake makes the climate milder, there is no sweltering heat in the summer or hard frosts during wintertime.

The local semiarid climate influences Kyzyl-Suu. There is some precipitation during a year. The average temperature is 5.4° C, and the average annual precipitation is 336 mm. The highest precipitation is in July – 48 mm on average, when the average temperature is 19.0° C.



## LOGISTICS

### Geographic location

The village is located 10 km from the Issyk-Kul lake, along the A363 road between Barskoon canyon and the Jeti-Oguz health resort.

### The road network and connections with the national and international roads

The distance to the nearest railway station is 276 km.

The distance to the Karakol marina is 38 km. The distance to the Balykchy sea port on the Eastern shore of the Issyk-Kul lake is 280 km.

Border crossings: the distance to Torugart, the nearest border-crossing point with China, is 443 km by road.

Detailed information on these points is provided at:

[www.advantour.com/rus/kyrgyzstan/border-crossing.htm](http://www.advantour.com/rus/kyrgyzstan/border-crossing.htm)

### Air transport

The Issyk-Kul International Airport in Tamchy village is designed for freight and passenger traffic. It provides services in the summer tourist season for the local and international flights in the following directions:

- Osh (Kyrgyzstan)
- Almaty (Kazakhstan)
- Tashkent (Uzbekistan)
- Novosibirsk (Russia)

The airport also provides charter flights year-round. [www.airport.kg/issykkul](http://www.airport.kg/issykkul)

### Railway transport

The railway station of the Issyk-Kul Region is located in Balykchy city (189 km). The carriage is performed by the National Company «Kyrgyz Temir Jolu» using the Balykchy-Bishkek-Lugovaya railway.

## DISTANCE FROM KYZYL-SUU TO THE KEY TRADE POINTS:

Direction	Distance	Travel time by car
Kyzyl-Suu – Bishkek	367 km	5 hours
Kyzyl-Suu – Almaty (Kazakhstan)	559 km	8 hours
Kyzyl-Suu – Tashkent (Uzbekistan)	985 km	12 hours
Kyzyl-Suu – Khorgos (Kazakhstan)	369 km	5 hours
Kyzyl-Suu – Issyk-Kul Airport	208 km	3 hours
Kyzyl-Suu – Manas Airport	385 km	5 hours
Kyzyl-Suu – Karakol	38 km	38 min



## INFRASTRUCTURE

**Power supply:** availability for the population – 100%.

**Water supply:** availability for the population – 100%; length – 71 km.

**Water consumption:** 282 thousand cubic meters per year.

**Sewage:** unavailable.

**Natural gas:** unavailable.

### **Telecommunications:**

Total number of phone connections in use is 1,118, including:

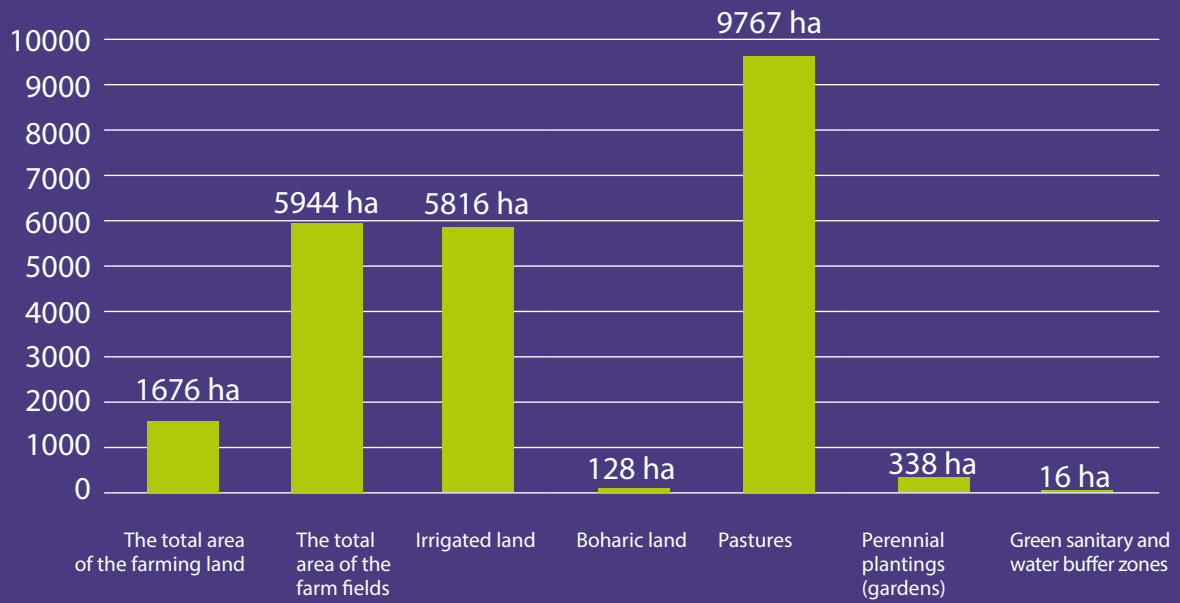
Telephone lines available for apartments and organizations – 793;

Number of subscribers, who have access to the Internet – 795.





## LAND





## BUSINESSES

Total registered businesses – **93**;  
Including: municipal – **5**; private – **88**.

Municipal utility companies:

- «Kyzyl-Suu kanal»;
- «Kyzyl-Suu Tazalyk»;
- «Kyzyl-Suu Jaryk»;
- «MTS Ak-Jol»;
- «Agrozoovetservis».

Agricultural enterprises – **4**;

Farm product processing enterprises – **3**;

Household farms – **655**;

Farm cooperatives – **34**;

Credit Unions – **5**;

Grain processing and bread production enterprises – **3**.



## COMPETITIVE SECTORS

### FRUITS, BERRIES AND AGRICULTURAL PRODUCTS PROCESSING

Most of the population is involved in agriculture and cattle breeding.

Kyzyl-Suu is surrounded by farming fields where wheat, barley, clover and sainfoin grow. The high-quality soil is suitable for growing organic grains, perennial grasses and apples. The total area of the gardens is 338 ha.





## COMPETITIVE SECTORS

### TOURISM

- «Aiu Tor» recreation zone is located in Chon Kyzyl-Suu canyon. Thermal water springs;
- Summer yurt camp. Kirpichniy village;
- «Jyluu suu» recreation zone. Kirpichniy village;
- «Nataly Resort» at Kara-Bulun.



## INVESTMENT PROJECTS

Construction of a green house and drip irrigation – «Kyzyl Alma» Ltd, the initiator of the project.

Construction of a mini shop for processing fruits and berries (drier). Individual entrepreneur Urakunov T., the initiator of the project.

Purchasing of equipment for the production of pasteurized juice in «Bag in Box» – «Sherbet» Ltd, the initiator of the project. The total cost of the project is 469,500 USD.

More detailed information on investment projects in the Kyzyl-Suu village can be obtained from the Agency for the Promotion and Protection of Investments under the **Government of the Kyrgyz Republic**.

**Address:** Bishkek 106 Chui Ave.

**Phone:** +996 312 62-38-44

**E-mai:** mail@invest.gov.kg

[www.invest.gov.kg](http://www.invest.gov.kg)



## LABOR POTENTIAL

Number of employed – 8111;

Unemployed – 137.

### Average monthly wages in 2018:

In the Jeti-Oguz region – 10 504 som;

In the Issyk-Kul region – 11 765 som;

In Kyrgyzstan – 16 427 som.

### Educational facilities / schools:

Pre-school facilities – 2. Number of students – 468.

Secondary schools – 4. Number of students – 3471.



## ADMINISTRATIVE PROCEDURES FOR CONSTRUCTION

Construction permits are issued by the territorial authority of Urban Planning and Architecture of the Issyk-Kul Region.

Permit documents for design and construction are issued in two stages based on the one-stop-shop rule.

**The first stage** – issuance of architecture and planning materials – takes 20 business days;

Architecture and planning materials for design of a facility contain:

- Major town planning, architecture, and planning requirements for the facility, including data about town planning regulations for use and building on the land plot, provided in the town planning documentation, Land Tenure and Building Rules;
- Sanitary, fire prevention, environmental requirements (depending on functional designation of the facility);
- Requirements for improvement of the land plot, organizing parking, and access to the facility (depending on functional designation of the facility);
- Technical requirements for engineering network connections.

**The second stage** – approval, expert examination of design documentation, and issuance of permit for construction – takes 40 business days.

More detailed information can be found at: <http://cbd.minjust.gov.kg/act/view/ru-ru/59299>

---

### Contact information:

Issyk-Kul Region Urban Planning and Architecture Department

**Address:** 1a Koenkozov St., Karakol city

**Phone:** +996 3922 51061

**E-mail:** arxitektura.oblastnaya@mail.ru



## SERVICES FOR INVESTORS

The procedure for obtaining municipal land for lease is carried out according to the Model Provision "On the Procedure and Conditions for the Reimbursable Granting of Ownership Rights or Leases to Land Plots Owned by Municipal Property", approved by the Decree of the Government of the Kyrgyz Republic dated September 23, 2011 No. 571.

1. Individuals and legal entities willing to obtain rights to land plots at the auctions apply to the authorized body with an application.

The application shall indicate:

- information about the applicant (information required for his unambiguous identification, legal entities should additionally indicate whether it is foreign);
- type of requested right to land plots (right of ownership or right of temporary use);
- description of investment and construction intentions, the area of the plot; in case the information about a particular land plot is missing, the applicant indicates the acceptable location, according to which the land plot will be selected and formed.

2. The authorized body shall issue a confirmation about the acceptance of the application to the applicant.
3. The authorized body on its own initiative or within 3 days from the date of receipt of the application forwards the appropriate instruction to form the land plot to the territorial authority of architecture and construction.

The instruction of the authorized body provides description of investment and construction intentions, approximate area of the plot and its location.

4. In the cases provided for by subparagraph a) of paragraph 11 of this Regulation, and if the land plot to which the right is granted was formed before, the reformation of the land plot is not required.
5. The territorial authority of architecture and construction within 5 working days reviews the declared construction intentions on the requested land plot for compliance with the town-planning documentation and the rules for land use and development.

More information about the regulation can be found at the link:

<http://cbd.minjust.gov.kg/act/view/ru-ru/95276>



## BANKS AND NOTARY OFFICES

### **Banks:**

«FINCA Bank», 190 Manas St. Phone: +996 3922 52767;

«Bai Tushum», 47 B. Ibraev St. Phone: +996 3946 52461;

«Optima Bank», 202 Manas St. Phone: +996 3946 52277;

«Aiyl Bank», 216 Manas St. Phone: +996 555 285231;

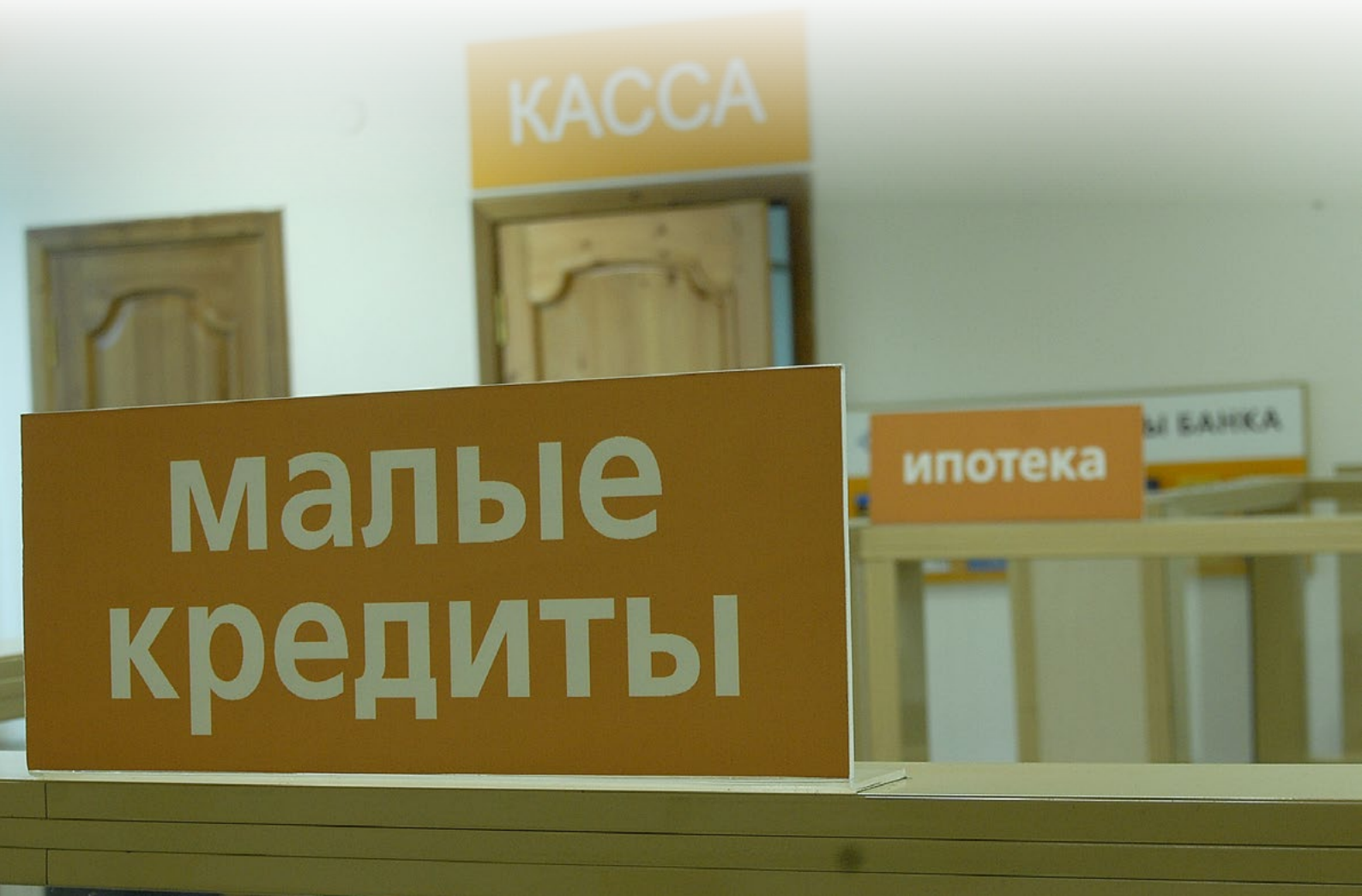
AKB «Kyrgyzstan», 105a Manas St. Phone: +996 312 613333;

«RSK Bank», 117a Manas St. Phone: +996 3946 51364.

### **Notary offices:**

State notary office, 49 1-Maya St;

Private notary office Sarybagyshev A., 163 Manas St.  
Phone: +996 704 131061.



## REGISTRATION OF LEGAL ENTITIES

List of necessary documents for state registration of commercial organizations (in the form of LLC, ALC, OJSC, CJSC, etc.)

- registration application pursuant to the form approved by the Resolution of the Government of the Kyrgyz Republic dated January 28, 2011, № 31;
- original decision approving, inter alia, state registration;
- copy of passport of a founder (individual);
- copy of certificate of state (re)registration of a founder (legal entity) – if the founder is a local legal entity;
- legalized extract from the state register or other document confirming that the founder (legal entity) validly exists pursuant to its laws of incorporation – if the founder is a foreign legal entity;
- copy of passport of a manager of a legal entity to be established;
- original power of attorney if a person acts through a proxy.

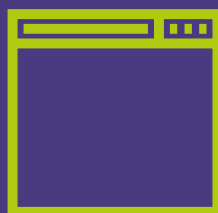
State registration of a legal entity is carried out on the following timeframes from the moment of filing the completed documentation:

- commercial entities – 3 business days;
- finance and credit organizations (bank, micro-finance company, micro-credit company, micro-credit agency, etc.), non-commercial organizations – 10 calendar days.

Registration of branch and representative offices is carried out by the Ministry of Justice of the Kyrgyz Republic and subdivisions thereof.

More detailed information can be found at the following link:

<http://minjust.gov.kg/ru/content/1079>





## KEY INVESTORS

### Farm products processing.

«Ak-Jalga» OJSC. Milk processing and dairy production.

«Kyzyl-Suu-Byshtak». Milk processing.

«Aibek-Plast». Processing of fruits and vegetables.

### Production of alcohol.

«Sherbet» winery.

### Production of construction materials.

«Kyzyl-Suu-Kirpich» («Favorit-Trans»).

### Production of furniture.

«Jeti-Oguz Cheber and K» Ltd. Production and trade of furniture;

«Darkan mebel». Production of furniture.



## SUCCESS STORIES

- **“Ak-Jalga” OJSC** milk processing plant was founded in 1994 on the basis of the former cheese plant. Today the plant processes 50-100 tons of milk per day, producing 80 tons of butter and 300 tons of cheese annually. The products are sold on the local market and exported in Kazakhstan. The plant is among the 10 largest companies in the Issyk-Kul region. 120 jobs have been created.
- **“Jeti-Oguz\_Cheber and K” Ltd** was founded in 2001 on the basis of Agrosnabtechservis. Today it is one of the leading companies in Kyzyl-Suu. Its main activities include the production and trade of furniture and PVC windows, trade of construction materials, household goods and equipment. The company has its own passenger and freight motor transport for the local transportation. The number of workplaces is 68.

## QUALITY OF LIFE

### Health care institutions

- Hospital;
- Medical and obstetric centers – **2**;
- Family-medicine centers – **3**;
- Pharmacies – **11**.



### Sports infrastructure:

- Sports grounds – 4;
- Sports gyms – 2.



## DEVELOPMENT PROGRAM

The aiyl aimak development program is approved annually by the Kyzyl-Suu rural administration.

### Contact information for investors

For inquiries regarding investment, please contact the Head of Kyzyl-Suu rural administration.

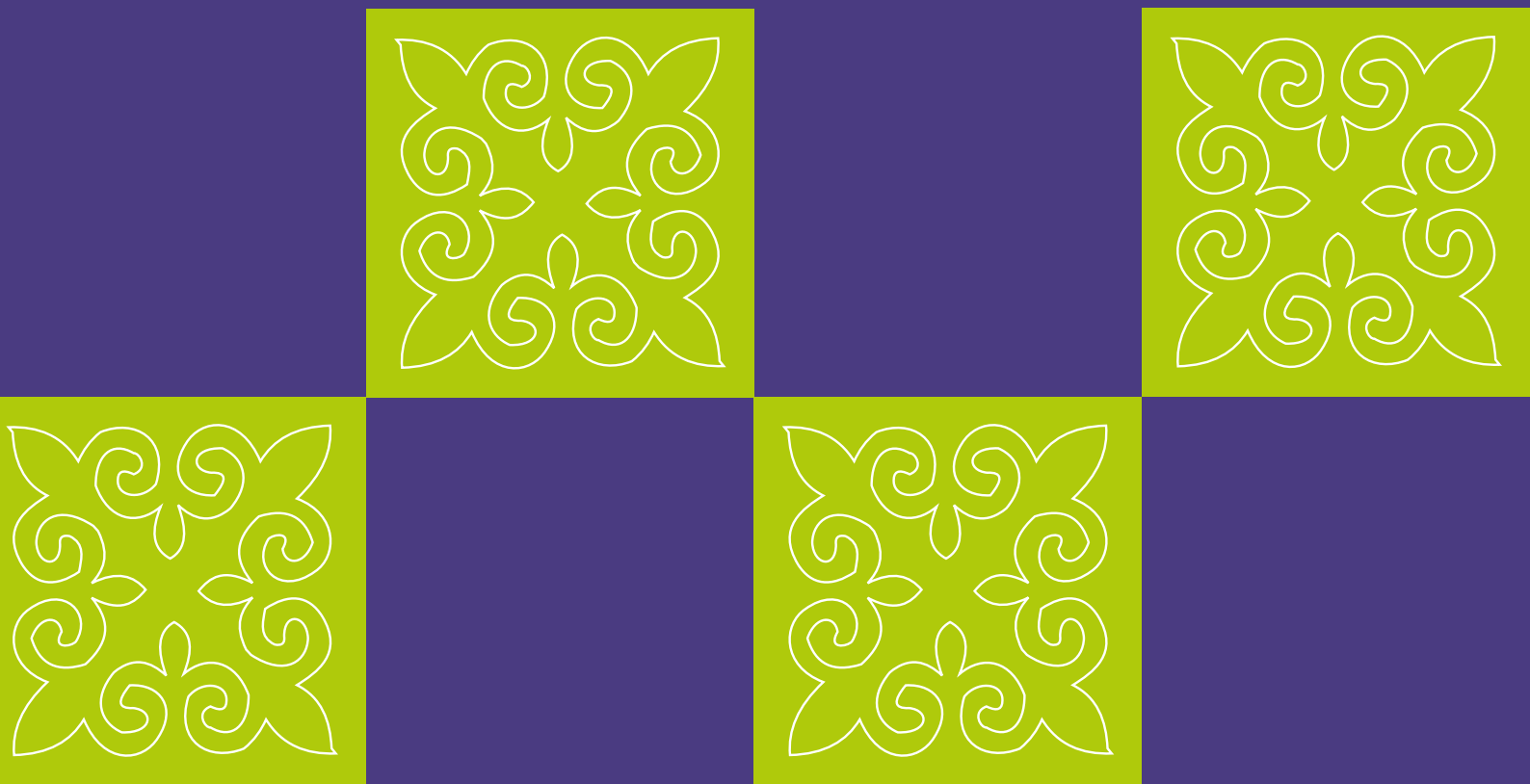
**Address:** 194 Manas St., Kyzyl-Suu village, Jeti-Oguz District, Issyk-Kul Region, Kyrgyz Republic.

**Phone:** +996 3946 52141

**E-mail:** [kyzylsuuaiylokmotu@mail.ru](mailto:kyzylsuuaiylokmotu@mail.ru)

[www.kyzylsuu.kg](http://www.kyzylsuu.kg)

*December 2019*



Development of Investment profile was supported by the IFC Kyrgyz Dairy Development Project. The project has been funded by the Ministry of Finance of Austria. The views expressed do not necessarily reflect the Austria government's official policies. The findings, interpretations, views and conclusions expressed herein do not reflect the views of the Executive Directors of the World Bank Group or the governments they represent